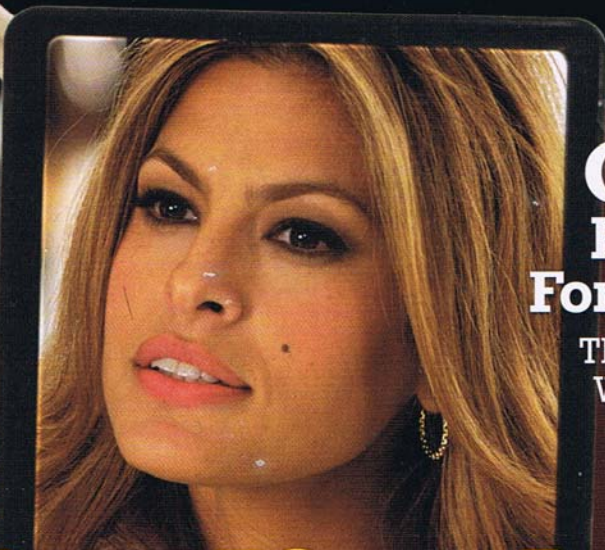


MAKE-UP ARTIST

Motion Picture • Television • Theater • Print

The **X** Factor
How a Canadian Crew Put the FX in *X-Files*

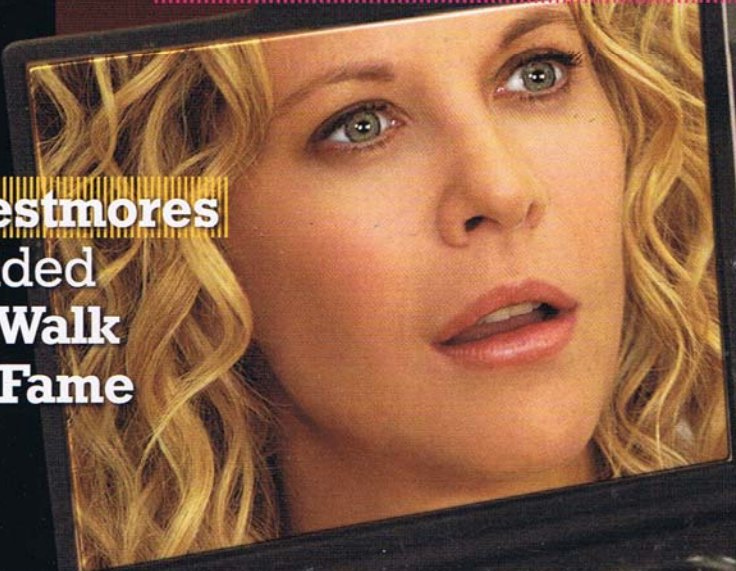


Gone But Not Forgotten
The Make-up World Loses Kehoe, Starr

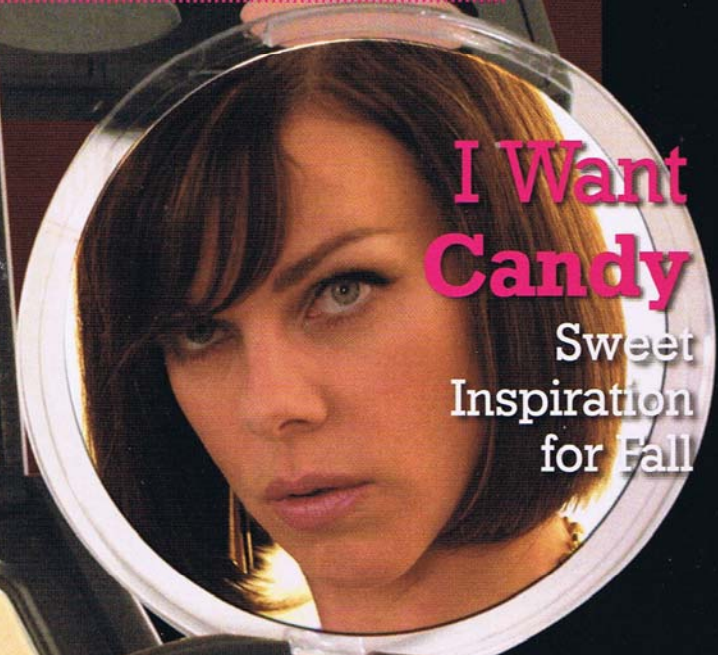
Hey, Ladies!

Making up a Bevy of Hollywood Beauties in *The Women*

Westmores Added to Walk of Fame



I Want Candy
Sweet Inspiration for Fall



Number 74 • \$6.99 U.S.
\$6.99 Canada • €6.99 Euro • £5.50 UK

7 25274 90399 3

Retro Style

Feel like a femme fatale or a bathing beauty with the **Quickie Chronicle Mini Set by Two Faced**. Designed with '50s pulp fiction in mind, these color-themed portable palettes come with two eye shadows, a lip gloss and a blush. The eight-pack set is available in October for Sephora's 10th anniversary. www.sephora.com



Photo Finish

L'ancôme's new **Photogenic Lumessence** liquid foundation fills in pores, smooths fine lines and wrinkles and provides a clean finish without pulling or tugging on the skin. The company attributes that seamless look to coated pigments, microparticles and moisturizing elements. The foundation contains SPF 15 and comes in a wide range of shades. www.lancome-usa.com



Sheer Genius

Inspired by Monet's famous watercolors and the Fall/Winter '08 runway looks, **Three Custom Color Specialists** has created **Watercolours for Cheeks**, a new line of sheer shades debuting this month. Each shade, from Pink Hyacinth to Violet Lotus, comes in its own mirrored compact and doubles as a lip tint. www.threecustom.com



Keep it Clean

Elegant Faces has everything you need to clean make-up brushes: there's the **EF Brush Spray** and **Brush Sanitising Spray**, which can be sprayed onto a tissue and used to wipe away make-up buildup, and the essential oil-infused, antibacterial **Brush Shampoo**, which you can dip brushes into directly. www.elegantfaces.com



Strap it On

If a fanny pack isn't your thing, there's always the **Grab-It Pack**, a holster that straps to your thigh and holds cosmetics, brushes and other on-set essentials. The front-buckle pockets keep products dry, and the pack could be a good option for make-up artists working outside in the elements. www.grabitpack.com

