

MAKE-UP

Motion Picture • Television • Theater • Print

ARTIST

Likeness
Make-ups
Mirror
History

IMATS
L.A.
Show
Hits
**Critical
Mass**

Unexpected
Partnership
Adds
Twist
to
BURMAN
Saga

Shu
Uemura's
**GINA
BROOKE**
on Luck,
Lashes and
Life with
Madonna

▶ Michael Jackson

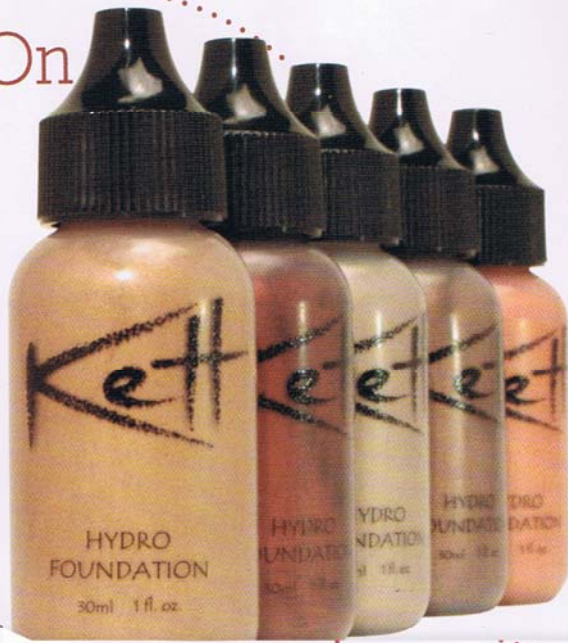
as You've Never Seen Him Before: Exclusive Make-up Shots and Stories

Number 79 • \$6.99 U.S.
\$6.99 Canada • €6.99 Euro • £5.50 UK



Rock On

Like the minerals they're named for—topaz, quartz, gypsum—the new **Kett Hydro Liquid Pigments** have an iridescent sheen. They contain mineral pigments, plus soothing vitamin E and glycerin in a water base that blends easily and works well with various skin tones and types. Apply with airbrush, fingers, sponge or make-up brush. www.kettcosmetics.com



Love for Lids

The **Jemma Kidd Eye Wardrobe Colour Quartet** contains complementary shades with just a hint of shimmer. The colors wear lightly and blend easily without caking. The rubberized compact won't slip through your fingers and the enclosed tip sheet (called "Jemma's Make-up Class") offers application ideas. www.jemmakidd.com



Lips That Stick

No need to reapply **OCC Lip Tar**: it goes on like a thick gloss, but once it's there, the color stays firmly in place. With just two or three individual pigments, each shade and tone (including black and white) can be blended easily or made more sheer with the clear Lip Tar base. You can mix or match any color you need. www.occmakeup.com



Easy Does It

Canadian dermatologist Dr. Jason Rivers designed his **Riversol** skin care line to work gently on all types of skin, including skin that has recently undergone medical or cosmetic procedures. His **Tplus Daily Cream Cleanser**, for example, is a non-sudsing, fragrance-free, hydrating wash that can be used even on inflamed skin. www.riversol.com



Neat!

Think of it as a splash guard for your make-up: The **Por-Pal**, designed by make-up artist Charles Porlier, is a lightweight stainless-steel palette that fits into the palm of your hand. A lip around one half of the palette prevents liquid make-up from spilling over the edge and onto the talent or the floor. www.hollynorth.com/store

